

## Recombinant C4.4A/LYPD3 Monoclonal Antibody

catalog number: AN300244P

**Note:** *Centrifuge before opening to ensure complete recovery of vial contents.*

### Description

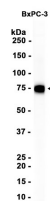
<b>Reactivity</b>	Human
<b>Immunogen</b>	Recombinant Human C4.4A / LYPD3 protein
<b>Host</b>	Rabbit
<b>Isotype</b>	IgG
<b>Clone</b>	B162
<b>Purification</b>	Protein A
<b>Buffer</b>	0.2 µm filtered solution in PBS

### Applications

### Recommended Dilution

**WB:** 1:1000; IHC-P: 1:200-1:1000; IP: 1:10-1:100

### Data



Western blot analysis of extracts from BxPC-3 cells at  
1:1000.

**Observed-MW:75 kDa**

**Calculated-MW:36 kDa**

### Preparation & Storage

<b>Storage</b>	Store at -20°C Valid for 12 months. Avoid freeze / thaw cycles.
<b>Shipping</b>	Ice bag

### Background

Supports cell migration. May be involved in urothelial cell-matrix interactions. May be involved in tumor progression.

### For Research Use Only